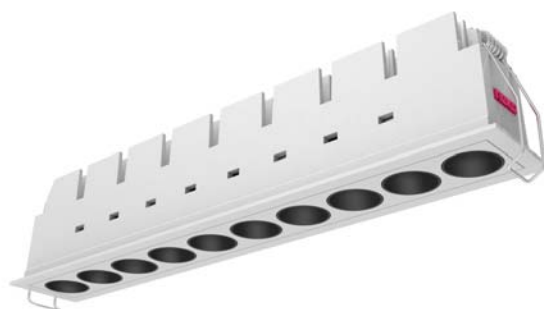

LED Downlight FUSION Series LE-FF10-22W-830-40D
Black



Light Output Ratio:	100.0%	
Luminaire Power:	24.12 W	
SHR Nominal:	0.50	Calculated using the TM5
SHR Maximum:	0.65	fine grid method.

C Range: 0 - 360DEG
C Interval: 15.0DEG
Test Speed: HIGH
Temperature: 25.3DEG
Operators: Cao Chengpei
Test Date: 2016-06-23

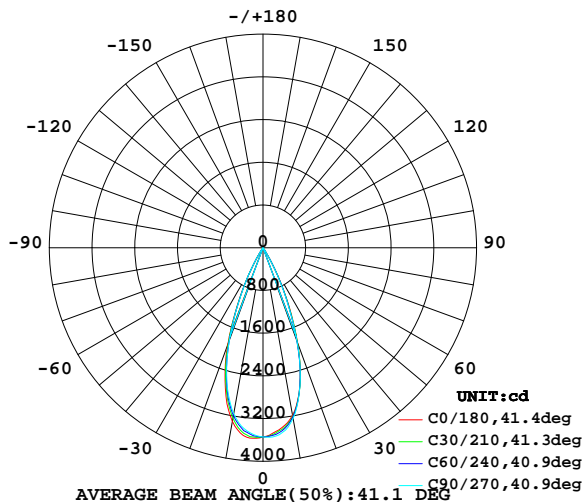
γ Range: 0 - 90DEG
γ Interval: 1.0DEG
Test System: EVERFINE GO-2000B_V1 SYSTEM V2.0.288
Humidity: 53.0%
Test Distance: 5.850m [K=1.0000]
Remarks:

LUMINAIRE PHOTOMETRIC TEST REPORT

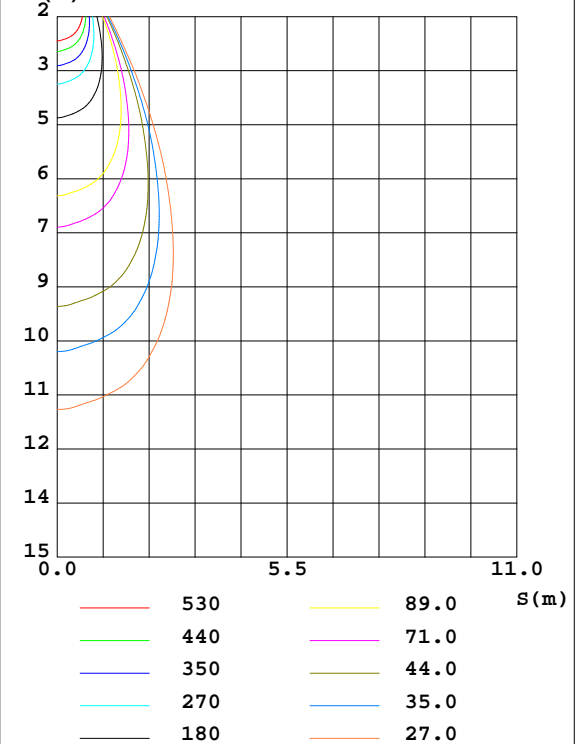
Test:U:220.6V I:0.1178A P:24.12W PF:0.9282 Lamp Flux:1567.86x1 lm		
NAME: FF10-22W-830-40D Black	TYPE:Downlight	SERIAL No.:
SPEC.:3000K	DIM.: L290mm*W45mm*H60mm	
MFR.:		

DATA OF LAMP		PHOTOMETRIC DATA Eff: 65.00 lm/W			
MODEL	CREE-3000K	I _{max} (cd)	3576	S/MH(C0/180)	0.64
NOMINAL POWER(W)	24	LOR(%)	100.0	S/MH(C90/270)	0.63
RATED VOLTAGE(V)	220	TOTAL FLUX(lm)	1567.9	η UP,DN(C0-180)	0.0,50.3
NOMINAL FLUX(lm)	1567.86	CIE CLASS	DIRECT	η UP,DN(C180-360)	0.0,49.7
LAMPS INSIDE	1	η up(%)	0.0	CIBSE SHR NOM	0.50
TEST VOLTAGE(V)	220	η down(%)	100.0	CIBSE SHR MAX	0.65

LUMINOUS INTENSITY DISTRIBUTION DIAGRAM



C0 PLANE ISOLUX DIAGRAM (UNIT:lx)



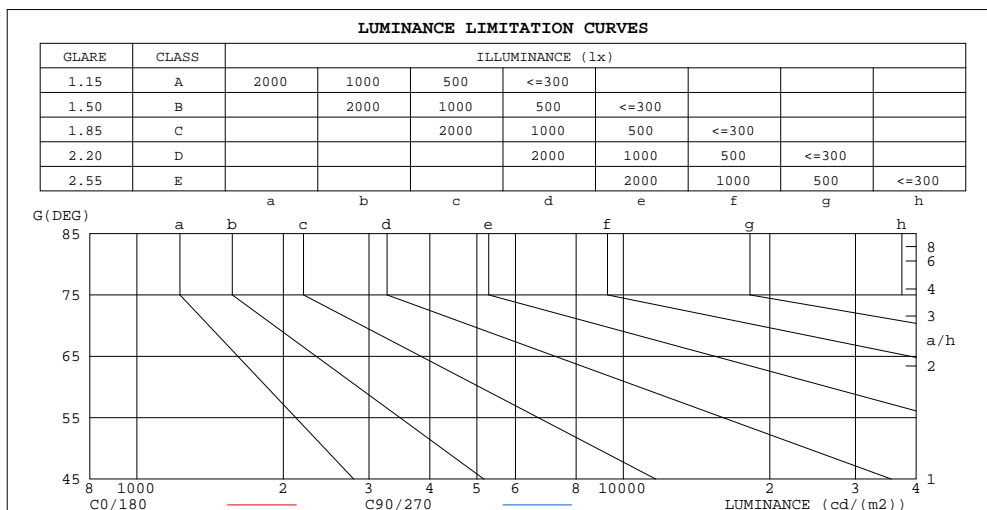
C Range: 0 - 360DEG
C Interval: 15.0DEG
Test Speed: HIGH
Temperature:25.3DEG
Operators:Cao Chengpei
Test Date:2016-06-23

γ Range: 0 - 90DEG
γ Interval: 1.0DEG
Test System:EVERFINE GO-2000B_V1 SYSTEM V2.0.288
Humidity:53.0%
Test Distance:5.850m [K=1.0000]
Remarks:

ZONAL FLUX DIAGRAM AND LUMINANCE LIMITATION CURVES

ZONAL FLUX DIAGRAM:

γ	C0	C45	C90	C135	C180	C225	C270	C315	γ	Φ zone	Φ total	$\%lum, lamp$
10	3186	3224	3245	3314	3303	3205	3158	3164	0- 10	324.6	324.6	20.7,20.7
20	1898	1894	1863	1916	1934	1848	1844	1873	10- 20	726.1	1051	67,67
30	347.1	353.8	317.0	328.5	346.6	324.3	330.6	338.7	20- 30	460.9	1512	96.4,96.4
40	6.579	7.496	6.049	6.392	6.527	6.855	7.130	7.588	30- 40	54.48	1566	99.9,99.9
50	0.3902	0.3960	0.3668	0.4109	0.3980	0.4071	0.3768	0.3901	40- 50	1.017	1567	100,100
60	0.2365	0.2257	0.2302	0.2364	0.2363	0.2536	0.2214	0.2429	50- 60	0.2687	1567	100,100
70	0.1662	0.1533	0.1683	0.1618	0.1661	0.1854	0.1597	0.1790	60- 70	0.1949	1568	100,100
80	0.1279	0.1126	0.1321	0.1233	0.1171	0.1385	0.1171	0.1364	70- 80	0.1528	1568	100,100
90	0.1193	0.1172	0.1129	0.1150	0.0831	0.0831	0.0852	0.0831	80- 90	0.1202	1568	100,100
100									90-100			
110									100-110			
120									110-120			
130									120-130			
140									130-140			
150									140-150			
160									150-160			
170									160-170			
180									170-180			
DEG	LUMINOUS INTENSITY:cd									UNIT:lm		



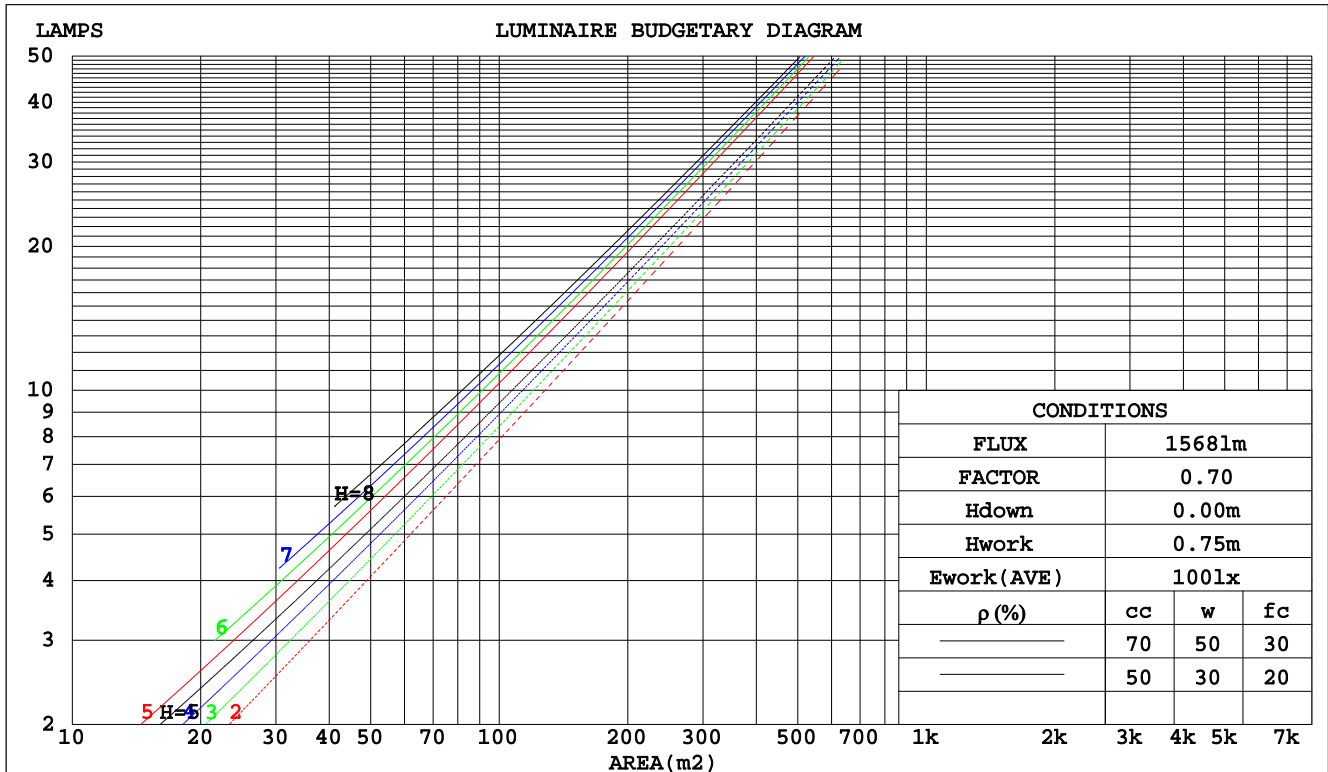
C Range: 0 - 360DEG
C Interval: 15.0DEG
Test Speed: HIGH
Temperature:25.3DEG
Operators:Cao Chengpei
Test Date:2016-06-23

γ Range: 0 - 90DEG
 γ Interval: 1.0DEG
Test System:EVERFINE GO-2000B_V1 SYSTEM V2.0.288
Humidity:53.0%
Test Distance:5.850m [K=1.0000]
Remarks:

CU AND LUMINAIRE BUDGETARY ESTIMATE DIAGRAM

Test:U:220.6V I:0.1178A P:24.12W PF:0.9282 Lamp Flux:1567.86x1 lm		
NAME: FF10-22W-830-40D Black	TYPE:Downlight	SERIAL No.:
SPEC.:3000K	DIM.: L290mm*W45mm*H60mm	
MFR.:		

pcc	80%			70%			50%			30%			10%			0
pw	50%	30%	10%	50%	30%	10%	50%	30%	10%	50%	30%	10%	50%	30%	10%	0
pfc	20%			20%			20%			20%			20%			0
RCR	RCR:Room Cavity Ratio						Coefficients of Utilization(CU)									
0.0	1.19	1.19	1.19	1.16	1.16	1.16	1.11	1.11	1.11	1.06	1.06	1.06	1.02	1.02	1.02	1.00
1.0	1.12	1.10	1.08	1.10	1.08	1.07	1.06	1.05	1.03	1.03	1.01	1.00	.99	.98	.98	.96
2.0	1.06	1.03	1.00	1.05	1.02	.99	1.02	.99	.97	.99	.97	.95	.96	.95	.93	.92
3.0	1.01	.97	.94	.90	.96	.93	.97	.94	.92	.95	.93	.91	.93	.91	.89	.88
4.0	.97	.92	.89	.96	.91	.88	.93	.90	.87	.92	.89	.86	.90	.87	.85	.84
5.0	.92	.88	.84	.91	.87	.84	.90	.86	.83	.88	.85	.83	.87	.84	.82	.81
6.0	.88	.84	.80	.88	.83	.80	.86	.83	.80	.85	.82	.79	.84	.81	.79	.77
7.0	.85	.80	.77	.84	.80	.77	.83	.79	.76	.82	.79	.76	.81	.78	.76	.74
8.0	.82	.77	.74	.81	.77	.73	.80	.76	.73	.79	.76	.73	.78	.75	.73	.72
9.0	.78	.74	.71	.78	.74	.71	.77	.73	.70	.76	.73	.70	.76	.72	.70	.69
10.0	.76	.71	.68	.75	.71	.68	.74	.70	.68	.74	.70	.68	.73	.70	.67	.66



C Range: 0 - 360DEG
 C Interval: 15.0DEG
 Test Speed: HIGH
 Temperature: 25.3DEG
 Operators: Cao Chengpei
 Test Date: 2016-06-23

γ Range: 0 - 90DEG
 γ Interval: 1.0DEG
 Test System: EVERFINE GO-2000B_V1 SYSTEM V2.0.288
 Humidity: 53.0%
 Test Distance: 5.850m [K=1.0000]
 Remarks:

WEC AND CCEC

Test:U:220.6V I:0.1178A P:24.12W PF:0.9282 Lamp Flux:1567.86x1 lm					
NAME: FF10-22W-830-40D Black			TYPE:Downlight		SERIAL No.:
SPEC.:3000K			DIM.: L290mm*W45mm*H60mm		
MFR.:					

pcc	80%			70%			50%			30%			10%			0
pw	50%	30%	10%	50%	30%	10%	50%	30%	10%	50%	30%	10%	50%	30%	10%	0
pfc	20%			20%			20%			20%			20%			0
RCR	RCR:Room Cavity Ratio						Wall Exitance Coefficients(WEC)									
0.0																
1.0	.148	.084	.027	.141	.080	.026	.129	.074	.024	.117	.068	.022	.107	.062	.020	
2.0	.138	.076	.023	.133	.073	.022	.122	.068	.021	.113	.063	.020	.104	.059	.019	
3.0	.130	.069	.021	.125	.067	.020	.116	.063	.019	.108	.059	.018	.101	.056	.017	
4.0	.122	.064	.019	.119	.062	.018	.111	.059	.018	.104	.056	.017	.098	.053	.016	
5.0	.116	.059	.017	.113	.058	.017	.107	.055	.016	.101	.053	.016	.095	.051	.015	
6.0	.111	.055	.016	.108	.054	.016	.102	.052	.015	.097	.051	.015	.092	.049	.014	
7.0	.106	.052	.015	.103	.051	.015	.098	.050	.014	.094	.048	.014	.090	.047	.014	
8.0	.101	.050	.014	.099	.049	.014	.095	.047	.014	.091	.046	.013	.087	.045	.013	
9.0	.097	.047	.013	.095	.046	.013	.092	.045	.013	.088	.044	.013	.085	.043	.012	
10.0	.094	.045	.012	.092	.044	.012	.089	.043	.012	.085	.042	.012	.082	.041	.012	

pcc	80%			70%			50%			30%			10%			0
pw	50%	30%	10%	50%	30%	10%	50%	30%	10%	50%	30%	10%	50%	30%	10%	0
pfc	20%			20%			20%			20%			20%			0
RCR	RCR:Room Cavity Ratio						Ceiling Cavity Exitance Coefficients(CCEC)									
0.0	.190	.190	.190	.163	.163	.163	.111	.111	.111	.064	.064	.064	.020	.020	.020	
1.0	.169	.158	.147	.145	.135	.127	.099	.093	.088	.057	.054	.051	.018	.017	.016	
2.0	.152	.133	.117	.130	.114	.101	.089	.079	.070	.051	.046	.041	.016	.015	.013	
3.0	.137	.113	.094	.118	.098	.082	.081	.068	.057	.047	.040	.034	.015	.013	.011	
4.0	.126	.098	.077	.108	.085	.067	.074	.059	.047	.043	.035	.028	.014	.011	.009	
5.0	.116	.086	.064	.099	.074	.056	.068	.052	.039	.040	.031	.023	.013	.010	.008	
6.0	.107	.076	.054	.092	.066	.047	.064	.046	.033	.037	.027	.020	.012	.009	.007	
7.0	.100	.068	.046	.086	.059	.040	.060	.042	.028	.035	.024	.017	.011	.008	.006	
8.0	.094	.062	.039	.081	.054	.034	.056	.038	.024	.033	.022	.015	.011	.007	.005	
9.0	.089	.056	.034	.077	.049	.030	.053	.034	.021	.031	.020	.013	.010	.007	.004	
10.0	.084	.052	.030	.073	.045	.026	.050	.032	.019	.029	.019	.011	.010	.006	.004	

C Range: 0 - 360DEG
 C Interval: 15.0DEG
 Test Speed: HIGH
 Temperature:25.3DEG
 Operators:Cao Chengpei
 Test Date:2016-06-23

γ Range: 0 - 90DEG
 γ Interval: 1.0DEG
 Test System:EVERFINE GO-2000B_V1 SYSTEM V2.0.288
 Humidity:53.0%
 Test Distance:5.850m [K=1.0000]
 Remarks:

UGR(Unified Glare Rating) Table

Test:U:220.6V I:0.1178A P:24.12W PF:0.9282 Lamp Flux:1567.86x1 lm										
NAME: FF10-22W-830-40D Black					TYPE:Downlight			SERIAL No.:		
SPEC.:3000K					DIM.: L290mm*W45mm*H60mm					
MFR.:										
ceiling/cavity	0.7	0.7	0.5	0.5	0.3	0.7	0.7	0.5	0.5	0.3
walls	0.5	0.3	0.5	0.3	0.3	0.5	0.3	0.5	0.3	0.3
working plane	0.2	0.2	0.2	0.2	0.2	0.2	0.2	0.2	0.2	0.2
Room dimensions	Viewed crosswise					Viewed endwise				
x = 2H y = 2H	4.6	5.3	4.8	5.4	5.6	4.1	4.9	4.4	5.0	5.2
3H	4.4	5.1	4.6	5.3	5.5	4.0	4.7	4.2	4.9	5.1
4H	4.3	5.0	4.6	5.2	5.4	3.9	4.6	4.2	4.8	5.0
6H	4.2	4.8	4.5	5.1	5.3	3.8	4.4	4.1	4.7	4.9
8H	4.2	4.8	4.5	5.0	5.3	3.8	4.4	4.1	4.6	4.9
12H	4.2	4.7	4.5	5.0	5.2	3.7	4.3	4.1	4.6	4.8
4H 2H	4.3	5.0	4.6	5.2	5.4	3.9	4.6	4.2	4.8	5.0
3H	4.2	4.7	4.5	5.0	5.2	3.7	4.3	4.0	4.6	4.8
4H	4.1	4.6	4.4	4.9	5.2	3.6	4.2	4.0	4.4	4.7
6H	4.0	4.4	4.3	4.7	5.1	3.5	4.0	3.9	4.3	4.7
8H	3.9	4.3	4.3	4.7	5.0	3.5	3.9	3.9	4.3	4.6
12H	3.9	4.2	4.3	4.6	5.0	3.4	3.8	3.8	4.2	4.6
8H 4H	3.9	4.3	4.3	4.7	5.0	3.5	3.9	3.9	4.3	4.6
6H	3.8	4.1	4.2	4.5	4.9	3.4	3.7	3.8	4.1	4.5
8H	3.7	4.0	4.2	4.5	4.9	3.3	3.6	3.8	4.1	4.5
12H	3.7	4.0	4.2	4.4	4.9	3.3	3.5	3.7	4.0	4.4
12H 4H	3.9	4.2	4.3	4.6	5.0	3.4	3.8	3.8	4.2	4.6
6H	3.7	4.0	4.2	4.5	4.9	3.3	3.6	3.8	4.0	4.5
8H	3.7	3.9	4.1	4.4	4.9	3.3	3.5	3.7	4.0	4.4
Variations with the observer position at spacings:										
S = 1.0H	+ 4.9 / - 9.1					+ 4.9 / - 9.1				
1.5H	+ 7.7 / - 9.0					+ 7.6 / - 9.0				
2.0H	+ 0.5 / - 0.4					+ 0.3 / - 0.3				

CIE Pub.117 Corrected 1568 lm Total Lamp Luminous Flux.(8log(F/F0) = 1.6)

C Range: 0 - 360DEG
 C Interval: 15.0DEG
 Test Speed: HIGH
 Temperature:25.3DEG
 Operators:Cao Chengpei
 Test Date:2016-06-23

γ Range: 0 - 90DEG
 γ Interval: 1.0DEG
 Test System:EVERFINE GO-2000B_V1 SYSTEM V2.0.288
 Humidity:53.0%
 Test Distance:5.850m [K=1.0000]
 Remarks:

UTILIZATION FACTORS TABLE

Test:U:220.6V I:0.1178A P:24.12W PF:0.9282 Lamp Flux:1567.86x1 lm		
NAME: FF10-22W-830-40D Black	TYPE:Downlight	SERIAL No.:
SPEC.:3000K	DIM.: L290mm*W45mm*H60mm	
MFR.:		

REFLECTANCE										
Ceiling	0.8	0.8	0.8	0.7	0.7	0.7	0.5	0.5	0.5	0
Walls	0.7	0.5	0.3	0.7	0.5	0.3	0.7	0.5	0.3	0
Working plane	0.2	0.2	0.2	0.2	0.2	0.2	0.2	0.2	0.2	0
ROOM INDEX	UTILIZATION FACTORS(PERCENT) $k(RI) \times RCR = 5$									
$k = 0.60$	92	86	83	91	86	82	90	85	82	79
0.80	98	93	90	98	93	90	97	92	90	86
1.00	102	97	94	101	97	94	100	96	93	90
1.25	106	101	98	105	100	98	103	99	97	93
1.50	108	104	101	107	103	100	105	102	99	95
2.00	110	106	103	109	105	103	106	103	101	96
2.50	111	108	105	110	107	105	107	104	103	97
3.00	113	110	107	111	108	106	108	106	104	98
4.00	115	112	110	113	111	109	109	107	106	99
5.00	116	114	112	114	112	111	110	109	108	100
ROOM INDEX	UF(total)									Direct
According to DIN EN 13032-2 2004			Suspended					SHRNOM = 1.25		

C Range: 0 - 360DEG
 C Interval: 15.0DEG
 Test Speed: HIGH
 Temperature:25.3DEG
 Operators:Cao Chengpei
 Test Date:2016-06-23

γ Range: 0 - 90DEG
 γ Interval: 1.0DEG
 Test System:EVERFINE GO-2000B_V1 SYSTEM V2.0.288
 Humidity:53.0%
 Test Distance:5.850m [K=1.0000]
 Remarks:

ISOCANDELA DIAGRAM

Test:U:220.6V I:0.1178A P:24.12W PF:0.9282 Lamp Flux:1567.86x1 lm		
NAME: FF10-22W-830-40D Black	TYPE:Downlight	SERIAL No.:
SPEC.:3000K	DIM.: L290mm*W45mm*H60mm	
MFR.:		

Conical surface Flux(90deg):

1566.9 lm

%lum = 99.9%

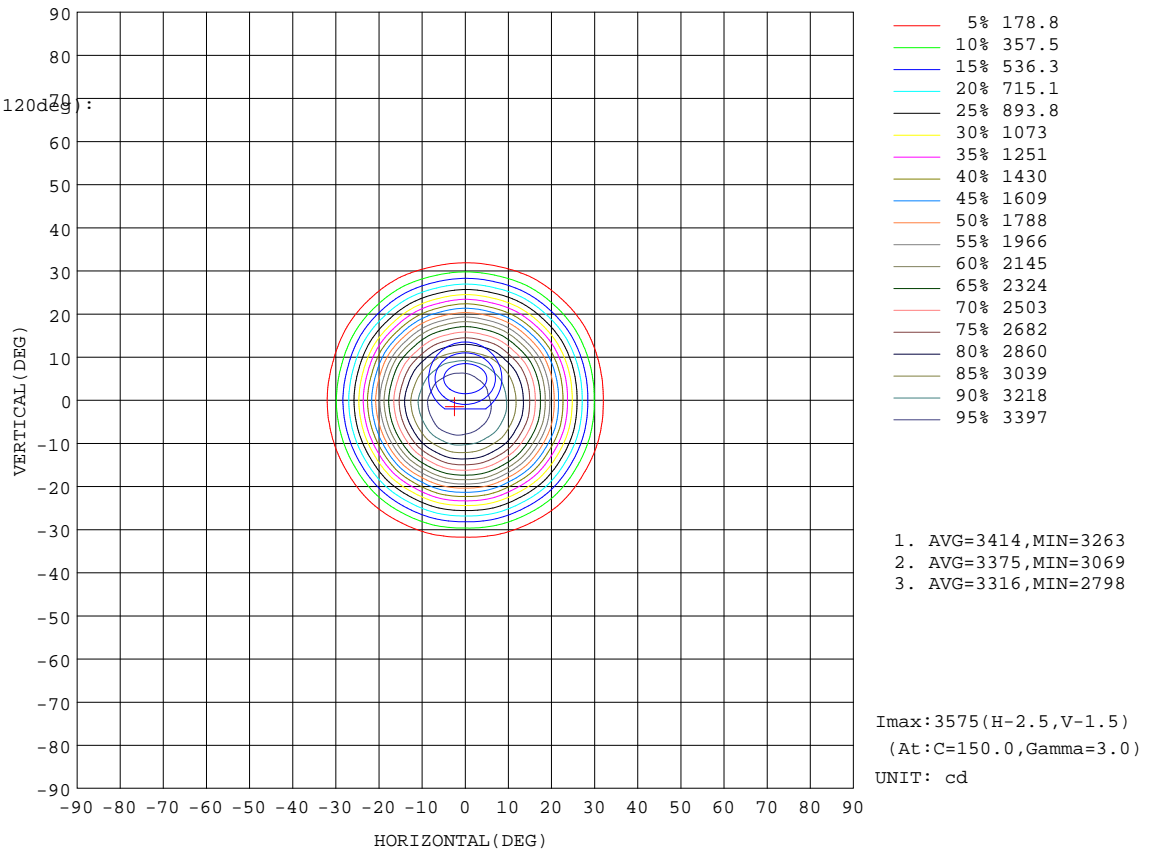
%lamp = 99.9%

Conical surface Flux(120deg):

1567.4 lm

%lum = 100.0%

%lamp = 100.0%



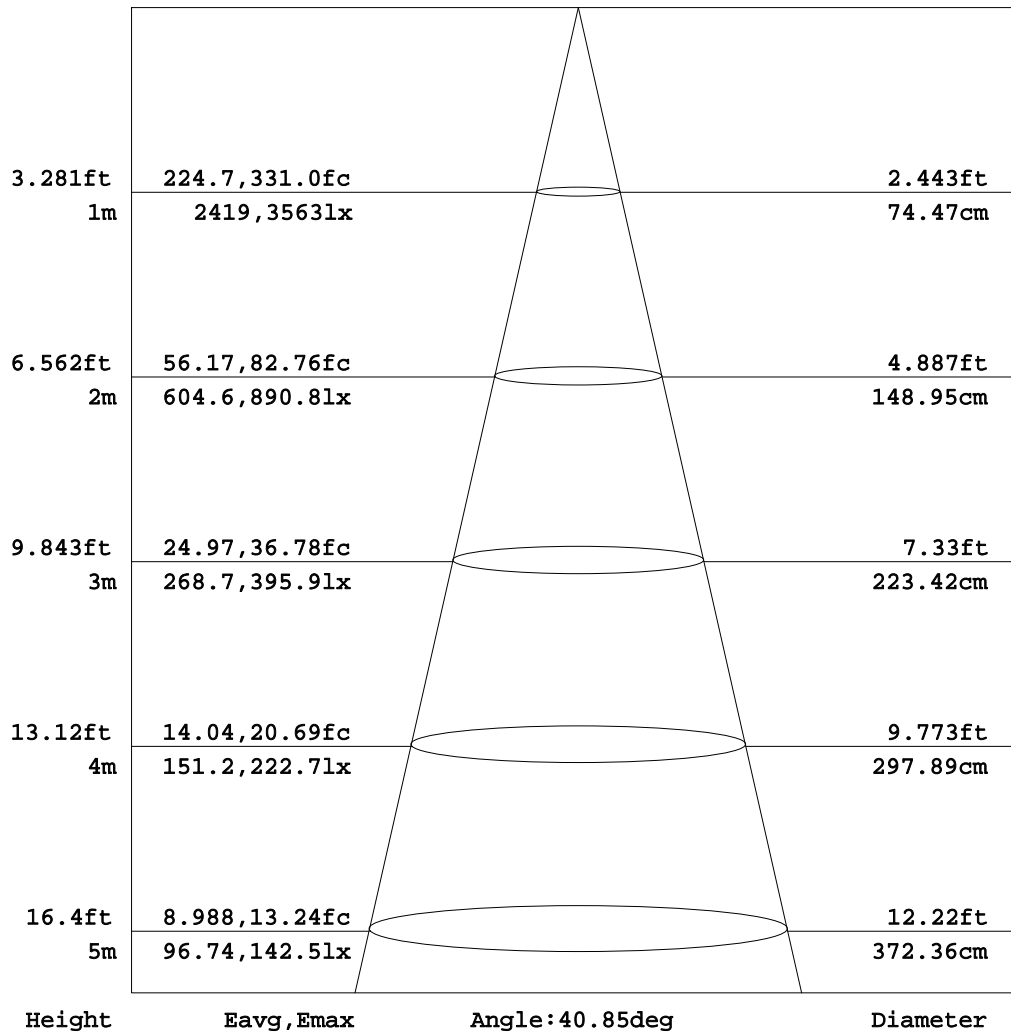
C Range: 0 - 360DEG
C Interval: 15.0DEG
Test Speed: HIGH
Temperature:25.3DEG
Operators:Cao Chengpei
Test Date:2016-06-23

γ Range: 0 - 90DEG
γ Interval: 1.0DEG
Test System:EVERFINE GO-2000B_V1 SYSTEM V2.0.288
Humidity:53.0%
Test Distance:5.850m [K=1.0000]
Remarks:

AAI Figure

Test:U:220.6V I:0.1178A P:24.12W PF:0.9282 Lamp Flux:1567.86x1 lm		
NAME: FF10-22W-830-40D Black	TYPE:Downlight	SERIAL No.:
SPEC.:3000K	DIM.: L290mm*W45mm*H60mm	
MFR.:		

Flux out:1120 lm



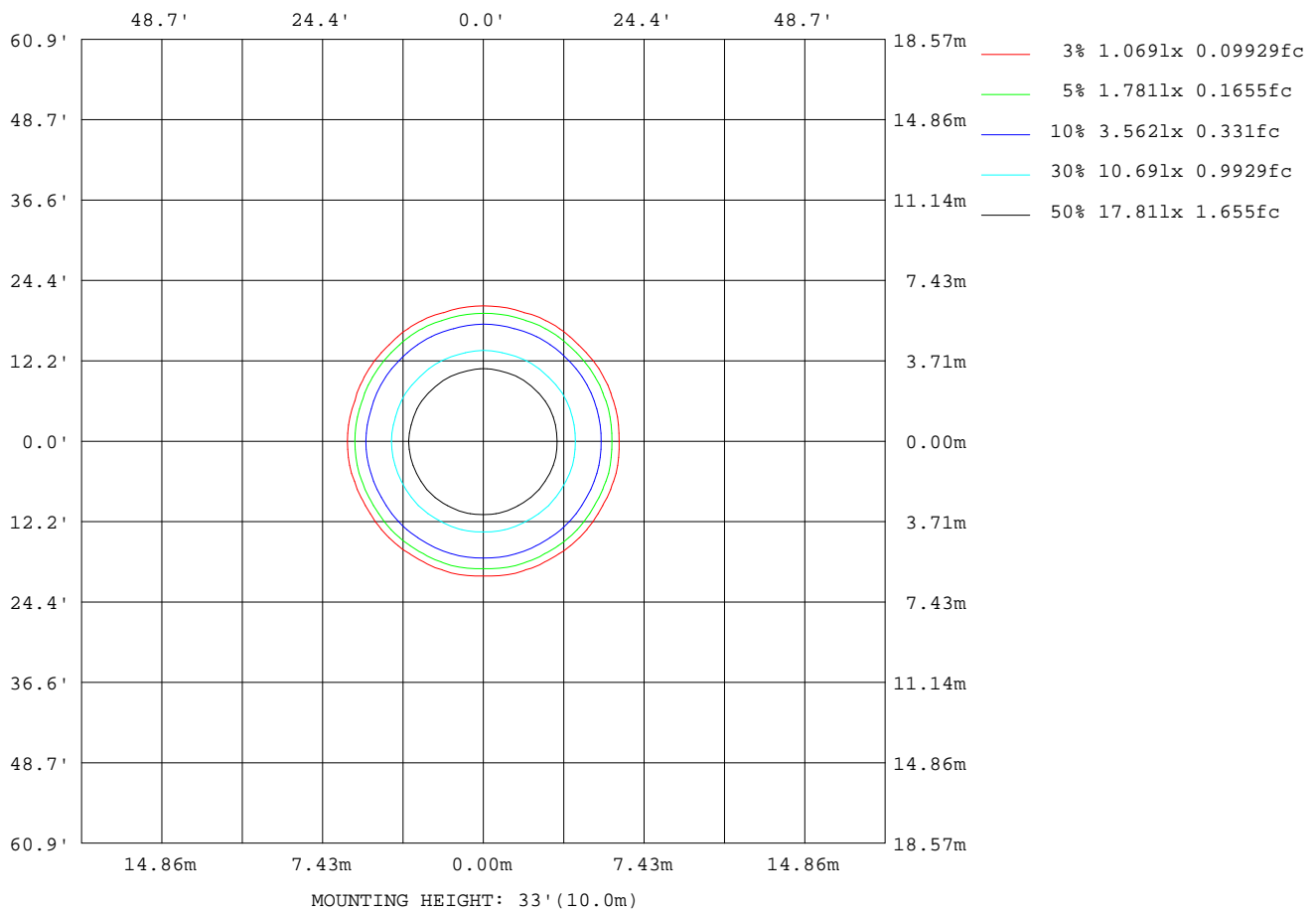
Note: The Curves indicate the illuminated area and the average illumination when the luminaire is at different distance.

C Range: 0 - 360DEG
C Interval: 15.0DEG
Test Speed: HIGH
Temperature: 25.3DEG
Operators: Cao Chengpei
Test Date: 2016-06-23

γ Range: 0 - 90DEG
γ Interval: 1.0DEG
Test System: EVERFINE GO-2000B_V1 SYSTEM V2.0.288
Humidity: 53.0%
Test Distance: 5.850m [K=1.0000]
Remarks:

ISOLUX DIAGRAM

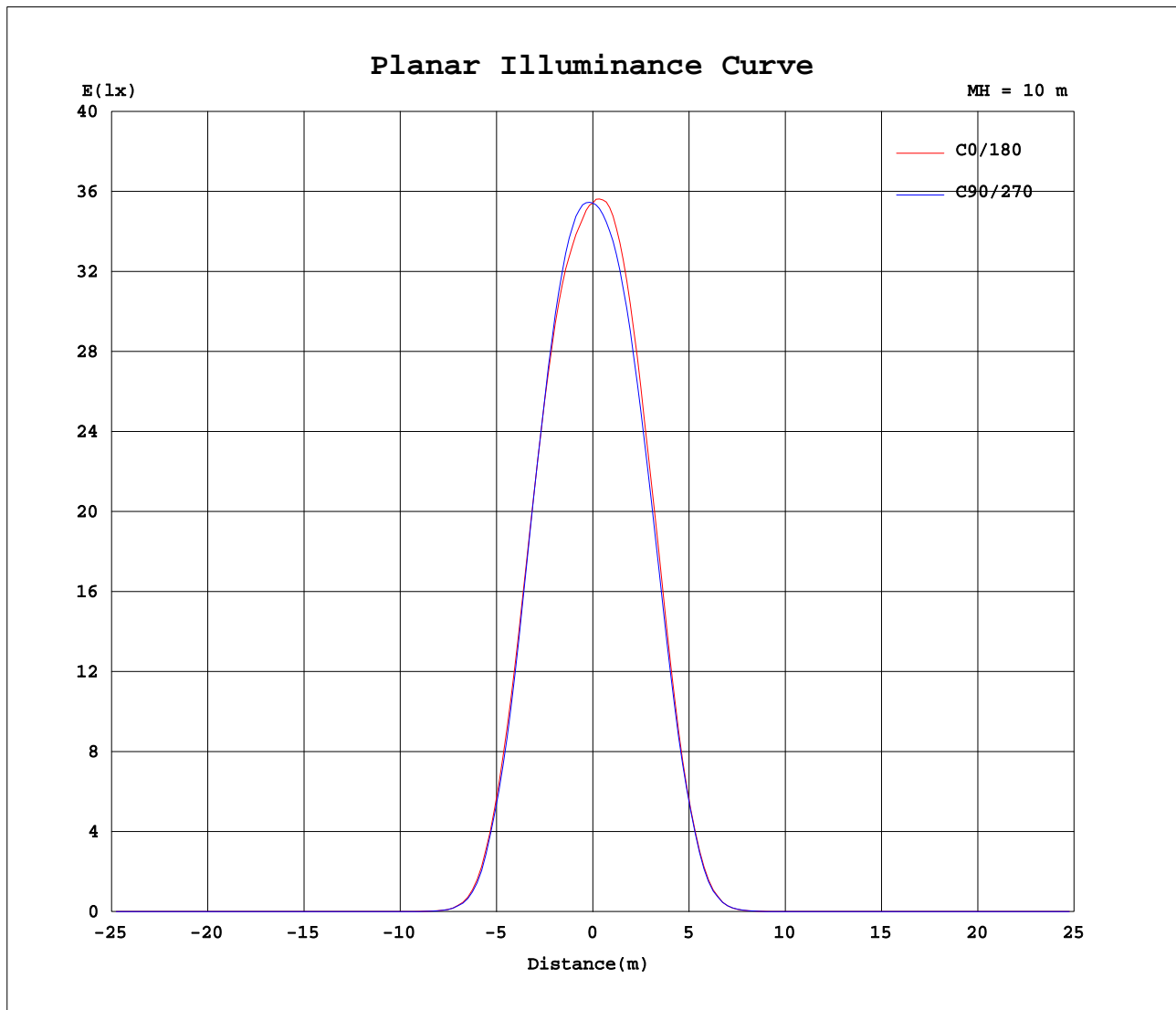
Test:U:220.6V I:0.1178A P:24.12W PF:0.9282 Lamp Flux:1567.86x1 lm		
NAME: FF10-22W-830-40D Black	TYPE:Downlight	SERIAL No.:
SPEC.:3000K	DIM.: L290mm*W45mm*H60mm	
MFR.:		



C Range: 0 - 360DEG
 C Interval: 15.0DEG
 Test Speed: HIGH
 Temperature: 25.3DEG
 Operators: Cao Chengpei
 Test Date: 2016-06-23

γ Range: 0 - 90DEG
 γ Interval: 1.0DEG
 Test System: EVERFINE GO-2000B_V1 SYSTEM V2.0.288
 Humidity: 53.0%
 Test Distance: 5.850m [K=1.0000]
 Remarks:

Planar Illuminance Curve



C Range: 0 - 360DEG
C Interval: 15.0DEG
Test Speed: HIGH
Temperature: 25.3DEG
Operators: Cao Chengpei
Test Date: 2016-06-23

γ Range: 0 - 90DEG
 γ Interval: 1.0DEG
Test System: EVERFINE GO-2000B_V1 SYSTEM V2.0.288
Humidity: 53.0%
Test Distance: 5.850m [K=1.0000]
Remarks:

LUMINOUS DISTRIBUTION INTENSITY DATA

Test:U:220.6V I:0.1178A P:24.12W PF:0.9282 Lamp Flux:1567.86x1 lm		
NAME: FF10-22W-830-40D Black	TYPE:Downlight	SERIAL No.:
SPEC.:3000K	DIM.: L290mm*W45mm*H60mm	
MFR.:		

UNIT: cd

[illegible]

```

γ Range: 0 - 90DEG
γ Interval: 1.0DEG
Test System:EVERFINE GO-2000B_V1 SYSTEM V2.0.288
Humidity:53.0%
Test Distance:5.850m [K=1.0000]
Remarks:

```

LUMINOUS DISTRIBUTION INTENSITY DATA

Test:U:220.6V I:0.1178A P:24.12W PF:0.9282 Lamp Flux:1567.86x1 lm		
NAME: FF10-22W-830-40D Black	TYPE:Downlight	SERIAL No.:
SPEC.:3000K	DIM.: L290mm*W45mm*H60mm	
MFR.:		

Table--2

UNIT: cd

[illegible]

C Range: 0 - 360DEG
C Interval: 15.0DEG
Test Speed: HIGH
Temperature: 25.3DEG
Operators: Cao Chengpei
Test Date: 2016-06-23

```

γ Range: 0 - 90DEG
γ Interval: 1.0DEG
Test System:EVERFINE GO-2000B_V1 SYSTEM V2.0.288
Humidity:53.0%
Test Distance:5.850m [K=1.0000]
Remarks:

```

Photometric Data Table [cd]

G/C	0.0	15.0	30.0	45.0	60.0	75.0	90.0	105.0	120.0	135.0
0.0	3542	3544	3542	3544	3542	3543	3542	3542	3542	3540
3.0	3478	3487	3503	3509	3519	3538	3548	3558	3565	3574
6.0	3387	3406	3420	3432	3444	3470	3479	3504	3533	3543
9.0	3254	3273	3276	3295	3294	3311	3321	3354	3373	3395
12.0	3017	3031	3032	3051	3036	3050	3052	3084	3088	3114
15.0	2673	2694	2679	2691	2672	2683	2677	2704	2696	2725
18.0	2236	2255	2236	2240	2213	2237	2222	2244	2240	2276
21.0	1721	1744	1710	1713	1679	1693	1675	1699	1687	1724
24.0	1204	1218	1186	1189	1154	1162	1139	1159	1143	1170
27.0	730.3	745.8	724.2	733.7	708.5	716.4	692.9	706.9	689.7	704.8
30.0	347.1	355.8	340.8	353.8	337.2	337.4	317.0	334.0	322.0	328.5
33.0	122.2	134.5	120.2	134.9	120.2	127.3	111.3	125.4	112.2	121.2
36.0	33.38	36.38	34.60	36.64	34.59	34.58	31.73	33.28	31.47	32.72
39.0	9.919	10.42	10.28	11.38	10.59	10.53	9.259	9.568	9.147	9.256
42.0	1.886	2.203	2.027	2.324	1.911	1.811	1.454	1.506	1.406	1.492
45.0	0.6411	0.6743	0.6687	0.6807	0.6366	0.6106	0.5746	0.5958	0.6130	0.6469
48.0	0.4499	0.4556	0.4691	0.4641	0.4563	0.4257	0.4222	0.4321	0.4648	0.4769
51.0	0.3646	0.3640	0.3795	0.3704	0.3710	0.3406	0.3475	0.3492	0.3816	0.3853
54.0	0.3091	0.3024	0.3197	0.3045	0.3133	0.2832	0.2963	0.2917	0.3219	0.3173
57.0	0.2664	0.2640	0.2749	0.2619	0.2749	0.2428	0.2579	0.2492	0.2792	0.2726
60.0	0.2365	0.2257	0.2429	0.2257	0.2408	0.2151	0.2302	0.2172	0.2430	0.2364
63.0	0.2110	0.1980	0.2153	0.1981	0.2131	0.1938	0.2067	0.1938	0.2195	0.2065
66.0	0.1897	0.1725	0.1960	0.1767	0.1961	0.1704	0.1896	0.1704	0.1982	0.1832
69.0	0.1726	0.1576	0.1747	0.1618	0.1769	0.1597	0.1726	0.1597	0.1790	0.1661
72.0	0.1598	0.1406	0.1598	0.1427	0.1641	0.1427	0.1577	0.1384	0.1641	0.1491
75.0	0.1449	0.1278	0.1470	0.1278	0.1470	0.1278	0.1492	0.1278	0.1513	0.1321
78.0	0.1342	0.1205	0.1364	0.1192	0.1385	0.1171	0.1385	0.1171	0.1385	0.1257
81.0	0.1257	0.1180	0.1257	0.1124	0.1257	0.1150	0.1300	0.1157	0.1278	0.1221
84.0	0.1214	0.1155	0.1172	0.1116	0.1172	0.1129	0.1193	0.1143	0.1193	0.1186
87.0	0.1193	0.1129	0.1172	0.1108	0.1108	0.1108	0.1150	0.1129	0.1150	0.1150
90.0	0.1193	0.1193	0.1172	0.1172	0.1108	0.1108	0.1129	0.1129	0.1150	0.1150
G/C	150.0	165.0	180.0	195.0	210.0	225.0	240.0	255.0	270.0	285.0
0.0	3542	3538	3542	3544	3542	3544	3543	3542	3542	3540
3.0	3576	3571	3572	3564	3548	3533	3524	3514	3499	3484
6.0	3543	3534	3535	3507	3492	3452	3445	3417	3407	3398
9.0	3380	3382	3380	3344	3321	3286	3269	3239	3231	3222
12.0	3106	3111	3110	3066	3045	3009	2998	2968	2967	2954
15.0	2714	2724	2730	2686	2679	2636	2632	2599	2615	2606
18.0	2264	2278	2287	2245	2246	2189	2187	2160	2179	2164
21.0	1710	1725	1746	1705	1715	1666	1673	1645	1668	1653
24.0	1152	1173	1189	1158	1169	1134	1146	1125	1149	1143
27.0	686.7	703.8	717.4	697.3	707.4	686.7	699.9	684.8	705.3	696.2
30.0	314.9	332.4	346.6	325.7	333.1	324.3	337.1	319.7	330.6	326.2
33.0	109.3	123.9	131.2	114.7	125.9	114.7	128.8	113.4	125.0	115.7
36.0	30.87	32.61	34.34	32.47	34.08	32.96	35.11	32.92	35.23	34.43
39.0	8.630	9.046	9.541	9.175	9.921	10.03	10.86	10.11	10.56	10.39
42.0	1.510	1.651	1.811	1.800	1.950	1.919	1.980	1.731	1.711	1.577
45.0	0.6451	0.6660	0.6635	0.6534	0.6720	0.6536	0.6613	0.6152	0.6146	0.6109
48.0	0.4797	0.4768	0.4598	0.4647	0.4555	0.4647	0.4576	0.4476	0.4363	0.4497
51.0	0.3923	0.3811	0.3704	0.3837	0.3704	0.3795	0.3704	0.3666	0.3555	0.3709
54.0	0.3325	0.3173	0.3129	0.3282	0.3109	0.3239	0.3151	0.3133	0.3002	0.3154
57.0	0.2877	0.2683	0.2662	0.2834	0.2683	0.2813	0.2641	0.2727	0.2555	0.2728
60.0	0.2494	0.2300	0.2363	0.2494	0.2321	0.2536	0.2321	0.2387	0.2214	0.2408
63.0	0.2238	0.2044	0.2087	0.2280	0.2087	0.2259	0.2065	0.2173	0.1981	0.2152
66.0	0.2024	0.1810	0.1853	0.2088	0.1853	0.2046	0.1852	0.1960	0.1767	0.1939
69.0	0.1812	0.1640	0.1683	0.1896	0.1683	0.1896	0.1661	0.1832	0.1619	0.1790
72.0	0.1684	0.1491	0.1533	0.1769	0.1554	0.1768	0.1533	0.1684	0.1469	0.1662
75.0	0.1555	0.1321	0.1384	0.1619	0.1384	0.1598	0.1384	0.1555	0.1384	0.1556
78.0	0.1428	0.1256	0.1299	0.1470	0.1256	0.1491	0.1298	0.1449	0.1277	0.1449
81.0	0.1321	0.1182	0.1129	0.1300	0.1086	0.1321	0.1107	0.1342	0.1107	0.1321
84.0	0.1194	0.1166	0.0958	0.1172	0.0937	0.1194	0.0979	0.1193	0.0958	0.1172
87.0	0.1172	0.1150	0.0831	0.0959	0.0831	0.1023	0.0831	0.1065	0.0873	0.1044
90.0	0.1150	0.1150	0.0831	0.0831	0.0831	0.0831	0.0831	0.0852	0.0852	0.0873
G/C	300.0	315.0	330.0	345.0						
0.0	3542	3540	3542	3538						
3.0	3479	3473	3474	3475						
6.0	3384	3389	3388	3378						
9.0	3233	3234	3250	3245						
12.0	2986	2985	3009	3010						
15.0	2641	2637	2675	2677						
18.0	2199	2203	2245	2243						
21.0	1695	1699	1746	1735						

C Range: 0 - 360DEG

C Interval: 15.0DEG

Test Speed: HIGH

Temperature: 25.3DEG

Operators: Cao Chengpei

Test Date: 2016-06-23

γ Range: 0 - 90DEG

γ Interval: 1.0DEG

Test System: EVERFINE GO-2000B_V1 SYSTEM V2.0.288

Humidity: 53.0%

Test Distance: 5.850m [K=1.0000]

Remarks:

Photometric Data Table [cd]

24.0	1181	1186	1227	1218
27.0	725.6	723.0	751.0	740.2
30.0	346.7	338.7	355.4	352.2
33.0	133.1	120.1	136.7	125.9
36.0	37.37	36.15	38.33	35.45
39.0	11.44	10.78	11.01	10.62
42.0	1.760	1.705	2.131	2.065
45.0	0.6400	0.6300	0.6590	0.6428
48.0	0.4470	0.4498	0.4427	0.4412
51.0	0.3619	0.3708	0.3576	0.3602
54.0	0.3066	0.3133	0.3002	0.3048
57.0	0.2640	0.2749	0.2555	0.2643
60.0	0.2299	0.2429	0.2235	0.2344
63.0	0.2023	0.2195	0.2002	0.2131
66.0	0.1852	0.1982	0.1789	0.1960
69.0	0.1661	0.1811	0.1619	0.1790
72.0	0.1533	0.1704	0.1448	0.1641
75.0	0.1363	0.1577	0.1320	0.1534
78.0	0.1257	0.1449	0.1214	0.1406
81.0	0.1107	0.1321	0.1107	0.1279
84.0	0.0980	0.1172	0.0979	0.1151
87.0	0.0831	0.1023	0.0831	0.1044
90.0	0.0831	0.0831	0.0810	0.0852

C Range: 0 - 360DEG
C Interval: 15.0DEG
Test Speed: HIGH
Temperature: 25.3DEG
Operators: Cao Chengpei
Test Date: 2016-06-23

γ Range: 0 - 90DEG
γ Interval: 1.0DEG
Test System: EVERFINE GO-2000B_V1 SYSTEM V2.0.288
Humidity: 53.0%
Test Distance: 5.850m [K=1.0000]
Remarks: